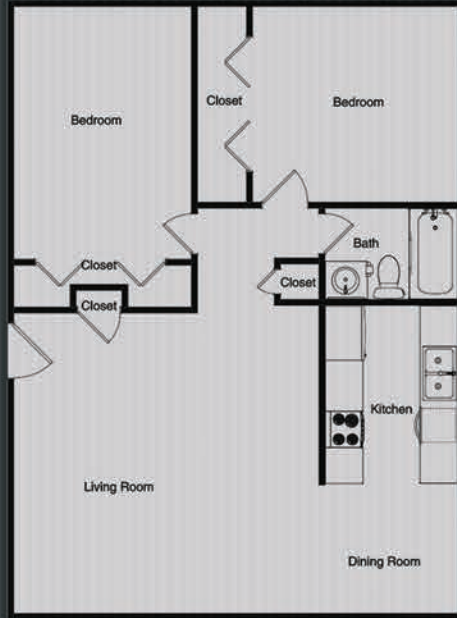


HOME PLANS AVAILABLE AT FOX VILLAGE:

2 Bed/1 Bath

932 Square Feet

MONTHLY RENT:



2 Bed/1.5 Bath

1,119 Square Feet

MONTHLY RENT:



1 Bed/1 Bath

700 Square Feet

MONTHLY RENT:



1 Bed/1 Bath/Den

900 Square Feet

MONTHLY RENT:



1 Bed/1 Bath

700 Square Feet

MONTHLY RENT:



exceptional features in your apartment home:

Skillfully Upgraded 1 and 2 Bedroom
Apartment Homes

Only 1 Minute to Indiana Avenue/ SR 35

Ideally Located in an Historic Residential Area

Secured Limited Access Entries

Convenient Washer/Dryer Included in Most Homes

Private Patio/Balcony with
Lovely French Door in Most Homes

Ask Us About "Heat-Included" Units!

Same-Day Resident Service

We LOVE Your Pet!

REAL HOSPITALITY IS FOUND HERE.



Hiawatha Ave & Fox Street

LaPorte, Indiana 46350

Tel: 219-713-1601

foxvillage@igcre.com



At FOX VILLAGE, you are only 1 minute away from Indiana Ave / SR 35, making it an excellent residential choice located in a beautiful and historic residential neighborhood of LaPorte, IN. Skillfully upgraded, and boasting a washer and dryer in many of the homes, you'll enjoy easy access to schools, shopping recreation, parks and so much more! We love your pet, offer free heat in many units and we can't wait to offer you our unsurpassed IGC Customer Service! We are proud that at Fox Village you can experience REAL HOSPITALITY.

