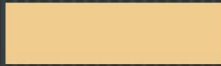


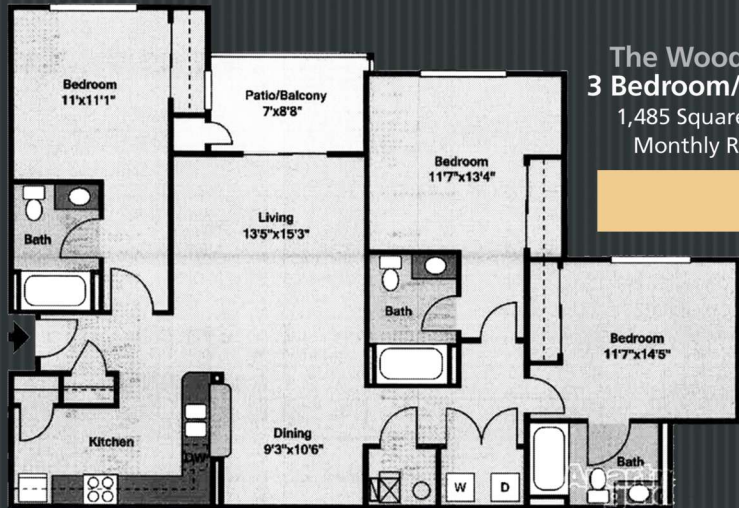
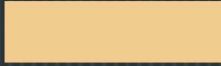
HOME PLANS AVAILABLE AT THE FIELDS OF NEW DURHAM:



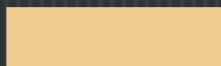
**The Crescent**  
**2 Bedroom/2 Bath**  
 1,093 Square Feet  
 Monthly Rent:



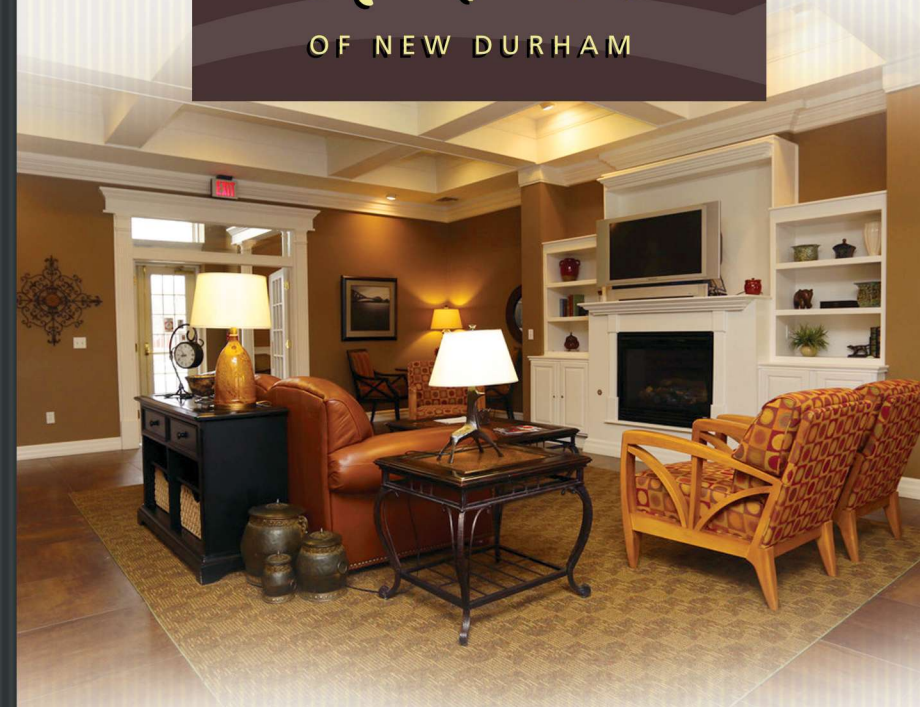
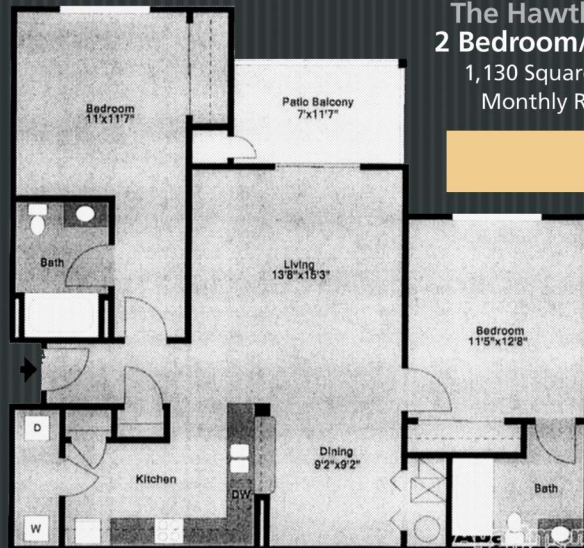
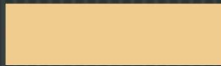
**The Evergreen**  
**2 Bedroom/2 Bath**  
 1,105 Square Feet



**The Woodland**  
**3 Bedroom/3 Bath**  
 1,485 Square Feet  
 Monthly Rent:



**The Hawthorne**  
**2 Bedroom/2 Bath**  
 1,130 Square Feet  
 Monthly Rent:



IGCRE.com



# REAL HOSPITALITY IS FOUND HERE.

## exceptional features in your apartment home:

2 and 3 Bedroom Apartment Homes  
with Adjacent Baths

Quiet and Wooded Property

Great School District

Easy Commuting: 1 Minute to I-80 Toll Road

We are Less Than 10 minutes  
to Valparaiso, Michigan City, and LaPorte

12 Minutes to Amtrak Station,  
the Beach, Blue Chip Casino,  
Washington Park Zoo, & Lighthouse Mall

Preferred Employer Rental Discounts

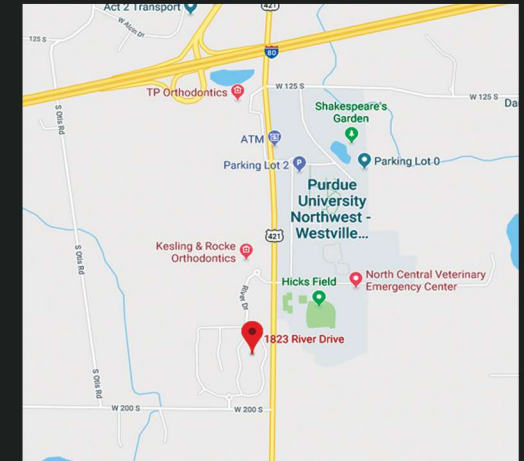
Fitness Center/Game Room/Pool

Washer/Dryer in Your Home

We Welcome Your Pet!  
Restrictions/HUD Provisions Apply



The Fields of New Durham Apartment Homes  
1823 South River Road  
Westville, IN 46319  
PH: 219.785.7275  
thefields@igcre.com



Neslted gently into rolling green hills in Westville,  
The Fields of New Durham lets you enjoy spacious  
and well appointed apartments with a beautiful  
clubhouse and fitness center. Now managed by the  
award winning and caring staff of In Good Company  
Property Management, this is the newest location to  
discover REAL HOSPITALITY!

