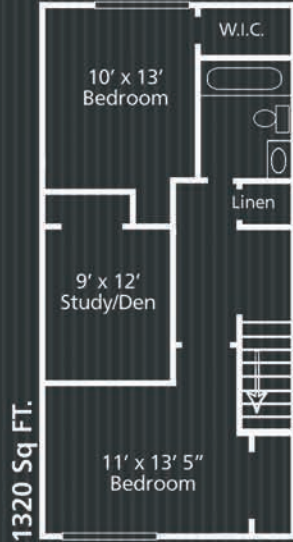
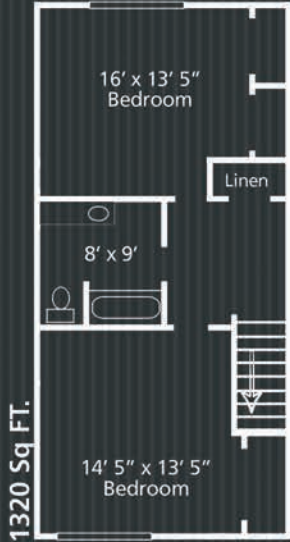


2 Bdrm + Den
1.5 Bath
 1320 Square Feet



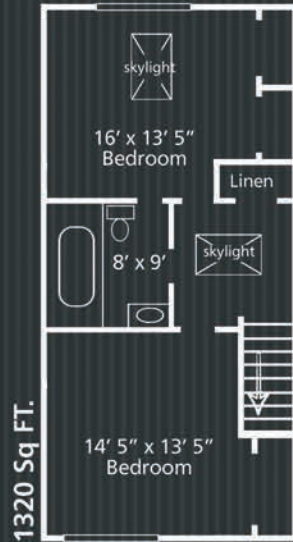
1320 Sq. FT.

Monthly Rent:



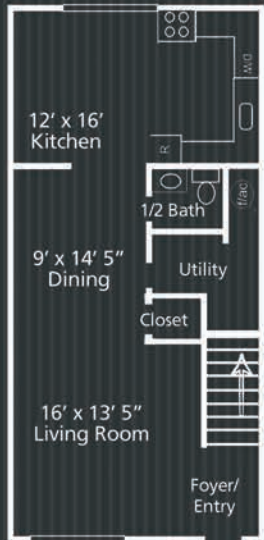
1320 Sq. FT.

Monthly Rent:

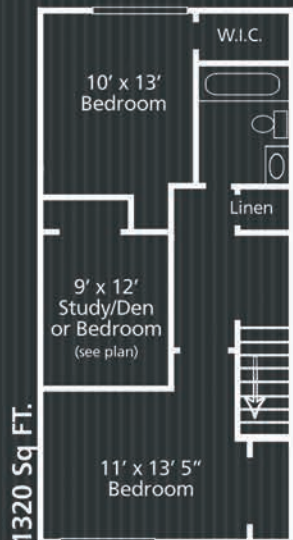


1320 Sq. FT.

Monthly Rent:

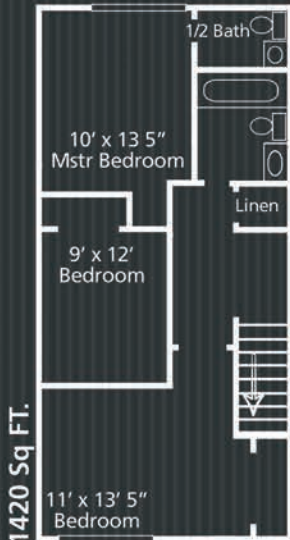


3 Bdrm
1.5 Baths or 2 1/2 Baths
 1320-1420 Square Feet



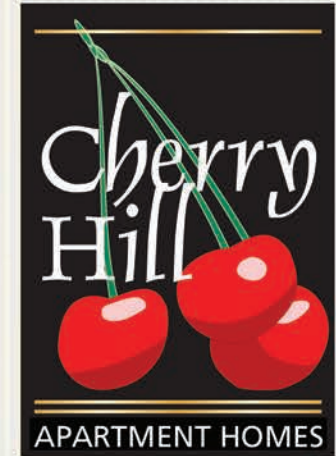
1320 Sq. FT.

Monthly Rent:



1420 Sq. FT.

Monthly Rent:



I·G·C
 RESIDENTIAL PROPERTY MANAGEMENT
In Good Company
IGCRE.com

**exceptional features
in your townhome:**

King-Size 2 & 3 Bedroom Townhomes

Personal Locking Garages

Private Entrances

Clean and Relaxing Swimming Pool with Huge Sun Deck

Family-Size Backyard Patios

Convenient Washer/Dryer Hook-ups in Every Home

Only 7 Minutes to the I-94/ I-80/90 Indiana Toll Road

Around-the-Clock Caring Resident Service



**REAL PEOPLE, REAL QUALITY, REAL CARING,
REAL HOSPITALITY**

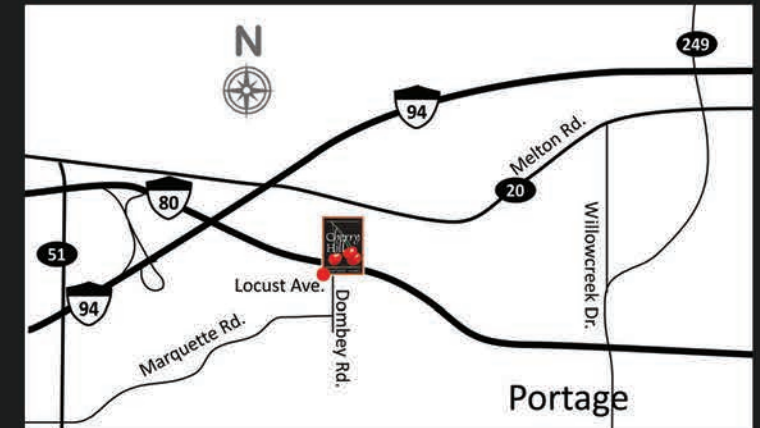
Cherry Hill Townhomes

5211 Rachel Ave

Portage, IN 46368

Phone: 219-762-5055 / Fax: 219-763-6567

cherryhill@igcre.com



At Cherry Hill enjoy one of the largest two and three bedroom townhomes available in Portage! We feature private entrances, plus the convenience of washer/dryer hook-ups in the homes. An over-sized patio area offers great relaxation or entertaining and large whirlpool style tubs are available in some homes. Other amenities include resort style pool and welcoming clubhouse. The location is convenient to downtown Portage shopping and minutes from West Beach Park on the shores of Lake Michigan.