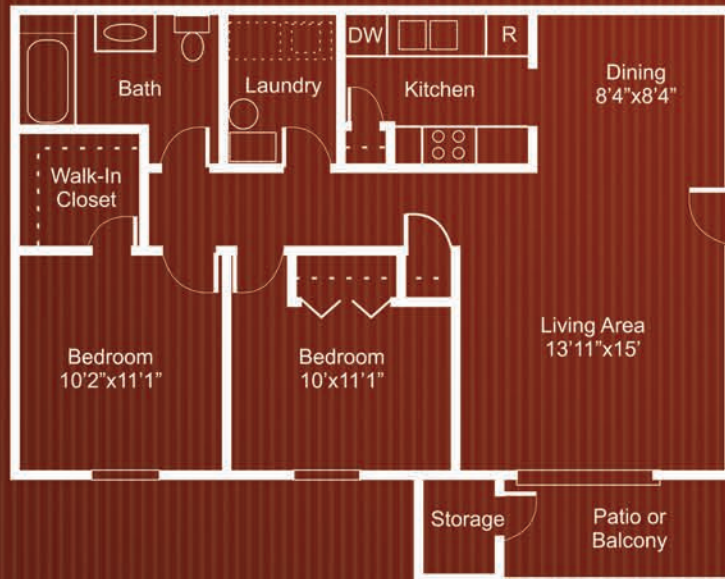
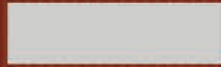


HOME PLANS AVAILABLE AT REFLECTIONS:

The Mystic

3 Bed/2 Bath
1008 Square Feet

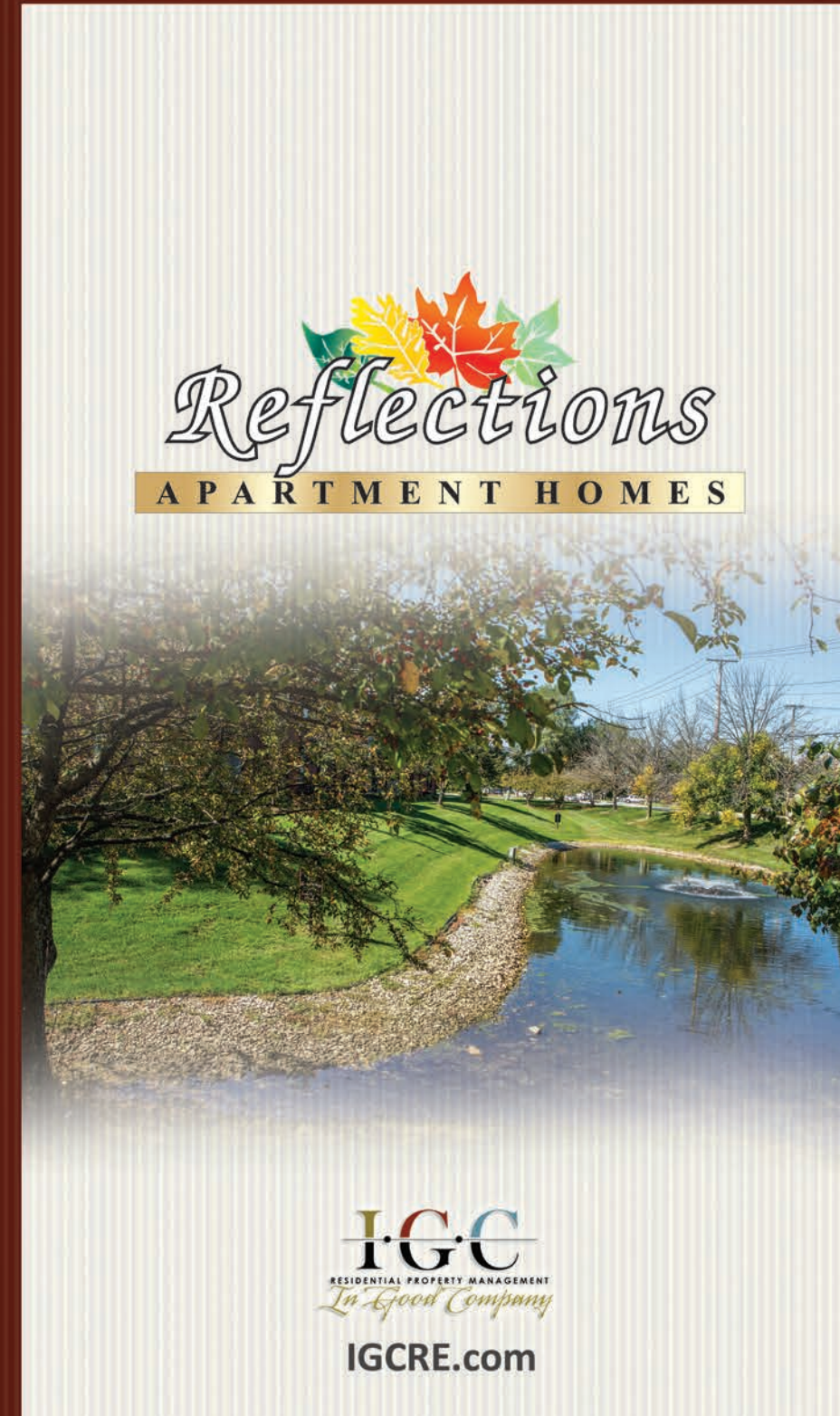
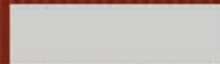
MONTHLY RENT:



The Shore

2 Bed/1 Bath
821 Square Feet

MONTHLY RENT:




APARTMENT HOMES



I·G·C
RESIDENTIAL PROPERTY MANAGEMENT
In Good Company

IGCRE.com

Take a look at the exceptional **comforts and conveniences** featured in your apartment home:

Newly Upgraded, Oversized and Bright
2 and 3 Bedroom Apartment Homes

Full-Size Washer and Dryer Hookup
in Every Home

9 Minutes to I-80/90 Toll Road

7 Miles to University Park Mall
and Grape Road

First Class Customer Service, Meticulously
Landscaped Grounds, and
Around-the-Clock Maintenance



**You
deserve
special
treatment.**

*We consider serving
you an honorable
profession, and it is
our pleasure to do so.*

Because we are
committed to
delivering the finest
hospitality experience
in the industry, you're
always In Good
Company with us!



Reflections Apartment Homes
411 Rosewood Drive
Mishawaka, IN 46544
Tel: 574-257-0024 Fax: 574-257-0045
email: reflections@igcre.com

This fully renovated community is only minutes from McKinley Highway and Toll Rd 80/90. Beautifully maintained grounds feature a large fountain, a playground area, plentiful parking, and plenty of green space. Every unit features hosts of upgrades and lovely, huge kitchens. Light-filled and spacious, REFLECTIONS offers everything you need to enjoy a convenient and active residential experience.